



LISC

Indianapolis
*Helping neighbors
build communities*

2015 Annual Report

Connecting people and places to opportunity





Connecting the people and places of urban Indianapolis to real opportunity, takes planning, partners, and a lot of L.O.V.E.

What is the plan?

LISC's goal is to develop and sustain Indianapolis neighborhoods to a level of vitality that will equip them to retain and attract diverse residents, jobs and business investments.

In 2015, LISC began implementation of its 2015-2018 Strategic Plan which seeks to transform neighborhoods and improve lives by strategic investments in:

Livability: creating healthy, active and beautiful places

Oppportunity: fostering entrepreneurship and employment

Vitality: reviving and growing a diverse population

Education: offering excellent, lifelong learning opportunities

In 2015, LISC invested \$15,127,522 directly into Indianapolis neighborhoods to achieve these L.O.V.E. outcomes. We leveraged another \$8,353,587 in additional investment. These catalytic investments align with neighborhood quality-of-life plans, which continue to guide comprehensive and targeted neighborhood revitalization citywide. Last year LISC supported the development of three Great Places plans, commercial revitalization plans for Mass Ave and International Marketplace, and one Quality-of-Life Plan for Southside Indianapolis.

Partnering for collective impact

In 2015, LISC continued to support community-based organizations in the Quality-of-Life Neighborhoods of Near West, North West Area, Mid-North, Northeast Corridor, Near East, and Southeast Indianapolis. We directly assisted 30 community-based organizations with program grants totaling \$1,856,729. We invested an additional \$267,112 in training, technical assistance, and capacity building for community-based organizations, improving our collective ability to improve neighborhoods.

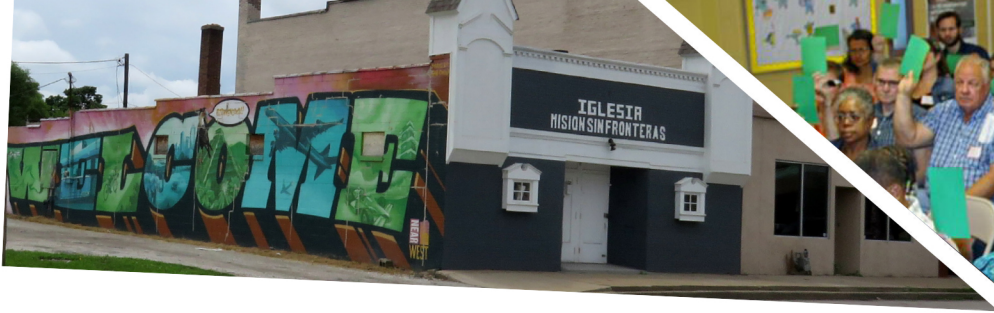
We convened neighborhood and city-wide partners around five key initiatives:

- ✓ Quality-of-Life Neighborhoods
- ✓ Fostering Urban Commercial Strategies (FOCUS)
- ✓ Center for Working Families
- ✓ Great Places 2020
- ✓ Indy Food Council

In all, Indianapolis LISC collaborated with more than 200 distinct organizational partners to achieve our mission in 2015.



Great Places 2020 is a visionary community development project created to transform strategic places in Marion County neighborhoods into dynamic centers of culture, commerce and community. In 2015 LISC, along with five implementation partners, announced the strategic plans and rebranding for three Great Places: Englewood Village, Maple Crossing and River West. Through the year 2020, more than \$84 million has been pledged to Great Places 2020 from over 50 partners.



All we need is L.O.V.E.

Our LOVE investments range from **\$7,403,681** in loan financing, **\$5,600,000** in equity investment, **\$1,856,729** in program grants, to **\$267,112** in training technical assistance and capacity building. Furthermore, LISC investment leveraged an additional **\$8,353,587** in neighborhood development.

Livability:

Creating healthy, active, beautiful places

Our investments in livability in 2015 focused on creating safe, healthy and authentic places through creative placemaking, increased food access, and adapting the built environment to encourage active transportation.

- Creative placemaking projects in the Great Places
- Supporting healthy food initiatives in MidNorth, Near East and North West Area
- Convening the Indy Food Council
- Participation in the public safety Byrne Criminal Justice Grant for North West Area
- Great Places planning that prioritized creating walkable and bike-friendly places

Opportunity:

Fostering entrepreneurship & employment

Commercial and Industrial district revitalization was a big part of LISC's work in 2015, exceeding the previous year's activity by 34% with 437,478 square feet of built and transformed commercial space and 83 new jobs created. This reflects a deepening commitment to LISC's role as a catalyst of neighborhood economic development as LISC assisted 102 businesses in neighborhood commercial corridors, connecting them to grants, technical assistance, and loans.

- Our work in the International Marketplace provided intensive commercial revitalization services including funding a plan, executing a new façade grant program, and lending with a job creation focus
- Mass Ave Industrial Corridor continues to gain momentum around the Circle City Industrial Complex and other food manufacturing and B2B businesses along the corridor

Vitality:

Reviving and growing a diverse population

- LISC provided acquisition and equity investment construction loans resulting in 91 units of built and transformed homes.
 - Oxford Senior Housing in Englewood Village Great Place
 - Pershing Apartments in River West Great Place
- We helped the three Great Places undergo a neighborhood branding process, resulting in three new identities. Also, LISC partnered with No Mean City as it promotes the urban neighborhood lifestyle.

Education:

Offering excellent lifelong learning opportunities

- LISC connected neighborhood residents to opportunity through coaching and training.
- 528 neighborhood residents gained new employment through the Center for Working Families initiative
- LISC launched a new program "Bridges to Career Opportunities" and funded three existing Centers to expand their occupational skills training in target growth sectors
- Supported the Mid-North Promise Program
- Planned around early childhood education in Southeast

LOVE THY NEIGHBORHOOD



2015: By the Numbers

LISC

Indianapolis
*Helping neighbors
build communities*



\$15,127,522

LISC investment in Indianapolis Neighborhoods

102

Businesses assisted
by FOCUS

83

New jobs created

437,478

Built and transformed
square feet of
commercial space

30

LISC assisted
community-based
organizations

\$5,600,000

Equity investment

\$7,403,681

Loan Financing

\$1,856,729

Program Grants

\$267,112

Training, technical
assistance and
capacity building

\$8,353,587

LISC leveraged in other
neighborhood
development investment

91

Built and transformed
units of housing

2,905

Families served by
Centers of Working
Families

528

Family members who
gained new
employment

18%

% of households
increased net
income



2015 Indianapolis LISC Local Advisory Board

Douglas R. Anderson
The Huntington National
Bank

Bruce Baird
Insight Development

Gary Brackett
Georgia Reese's

Katy Brett
Renew Indianapolis

David DeMoss
State Farm

Jan Diggins
Citizens Energy Group

Leigh Riley Evans
Mapleton-Fall Creek
Development Corporation

Mark Fisher
Indy Chamber

Patricia Gamble-Moore
PNC Bank

Jay Geshay
United Way of Central
Indiana

Thomas Harton
Indianapolis Business
Journal

Brandon Judkins
Salesforce

Vicky Keramida
Keramida Inc

Robin Ledyard, MD, MPH
Community Health
Network

Christopher Piazza
Reverie Estates LLC

Melissa Murphy
BMO Harris Bank

Una Osili
Indiana University Lilly
Family School of
Philanthropy

Maria M. Quintana
Bose Public Affairs
Group

Adam Thies
City of Indianapolis

George Tikijian
Tikijian Associates

Tonio Torres
JP Morgan Chase Bank

Stephen Van Soelen
Eli Lilly and Company

David Wantz
University of Indianapolis

John Watson
Core Redevelopment LLC

Robin Winston
The Winston/Terrell Group



2015 Contributors

LISC Indianapolis is grateful for the generosity of its donors, whose support is critical to the important work of improving Indy's urban communities.

Corporate

Barrett & Stokely
BMO Harris Bank
Browning Investments LLC
Buckingham Foundation
Cummins Foundation
Dollar General Literacy Foundation
Faegre Baker Daniels Foundation
Federal Home Loan Bank
Fifth Third Bank
Flaherty & Collins
Health and Hospital Corporation of Marion County
Horizon Bank
Huntington Bank
Insight Development
IU Health
JP Morgan Chase Foundation
MIBOR Realtor Association
Old National Bank Foundation
Paul I. Cripe Charitable Foundation
PNC Foundation
Shiel Sexton
State Farm

Individuals

Bruce Baird	Gary Woodworth	Lesley Fitzsimons	Robin Ledyard
Daniel Richins	George Tikijan	Maria Quintana	Sara Van Slambrook
David Forsell	John Watson	Mark Gramelspacher	Tedd and Sarah Grain
David Wantz	Jon and Missy Berg	Mark Grant	Tom Harton
Douglas Anderson	Katy Brett	Rachel McIntosh	Tom Orr and Terri Garcia
	Leigh Evans		

Philanthropic

Butler University
Efroymsen Family Fund
Funders Network for Smart Growth
Indiana Association for Community and Economic Development
Indianapolis Neighborhood Housing Partnership
Lilly Endowment Inc.
Nina Mason Pulliam Charitable Trust
Robert Woods Johnson Foundation
The Clowes Fund
The Glick Fund, a fund of Central Indiana Community Foundation
The Indianapolis Foundation, a CIOF affiliate
United Way of Central Indiana
Vision Communities

Government

City of Indianapolis
Corporation for National and Community Service
Indiana Housing and Community Development Authority
U.S Department of Housing and Urban Development

LISC is dedicated to helping community-based organizations transform distressed neighborhoods into healthy and sustainable communities - good places to live, work, do business, and raise children.
www.liscindianapolis.org



LISC Indianapolis
The Platform
202 E. Market Street
Indianapolis, IN 46204
(317) 454-8486

LISC
Indianapolis
Helping neighbors
build communities